

PEAD-M R32

Ceiling Concealed Ducted System

Power Inverter Heat Pump (Single Phase)

Mr. SLIM™

The **PEAD-M Power Inverter** range is a ceiling concealed ducted system that blends a host of outstanding features with an unobtrusive design (only 250mm height) for easy installation and maintenance.

Offering high seasonal efficiency, advanced control options and extended pipe runs, the units also come with a wide range of external static pressure settings, making this range an extremely flexible solution for applications such as light commercial, schools and warehousing.

R32



Key Features & Benefits:

- Increased comfort levels through advanced airflow and smart defrost features
- Compact, single fan outdoor unit chassis across the whole range, for unobtrusive and discreet installation
- 100m pipe run (size 100-140), increasing application capability
- Energy usage display available as standard with the PAR-41MAA controller
- Improved efficiency through new fan motor
- Full heating capacity down to -3°C
- Drain pump included as standard
- Compatible with Plasma Quad Connect - an innovative, bolt-on air purifying device which neutralises viruses, bacteria, allergens, PM2.5, mould and dust





PEAD-M INDOOR UNITS		PEAD-M35JA2	PEAD-M50JA2	PEAD-M60JA2	PEAD-M71JA2	PEAD-M100JA2	PEAD-M125JA2	PEAD-M140JA2
CAPACITY (kW)	Heating (nominal)	4.1 (1.6-5.2)	6.0 (2.5-7.3)	7.0 (2.8-8.2)	8.0 (3.5-10.2)	11.2 (2.7-14.0)	14.0 (3.2-16.0)	16.0 (3.70-18.0)
	Cooling (nominal)	3.6 (1.6-4.5)	5.0 (2.3-5.6)	6.1 (2.7-6.7)	7.1 (3.3-8.1)	9.5 (4.9-11.4)	12.5 (5.1-14.0)	13.4 (6.40-15.0)
	Heating (UK)	3.5 (1.35-4.4)	5.1 (2.15-6.2)	5.95 (2.4-6.95)	6.8 (3.0-8.65)	8.4 (2.025-10.5)	10.5 (2.4-12.0)	12.0 (2.775-13.5)
	Cooling (UK)	3.3 (1.45-4.15)	4.6 (2.1-5.15)	5.5 (2.5-6.15)	6.55 (3.05-7.45)	9.025 (4.655-10.83)	11.88 (4.85-13.3)	12.73 (6.13-14.25)
SHF (nominal)		0.85	0.84	0.83	0.80	0.82	0.78	0.77
COP / EER (nominal)		4.50 / 4.30	4.40 / 4.20	4.40 / 4.10	4.20 / 4.00	4.40 / 4.20	3.72 / 3.70	3.90 / 3.62
SCOP (η _{sh}) / SEER (η _{sc}) (BS EN14825)		4.1 (161.6%) / 6.3 (278.9%)	4.4 (174.1%) / 6.4 (274.1%)	4.2 (165.8%) / 6.2 (264.9%)	4.3 (170.1%) / 6.3 (265.6%)	4.40 / 6.60	4.18 (164.5%) / 6.68 (264.1%)	4.16 (163.2%) / 6.53 (258.3%)
ERP ENERGY EFFICIENCY CLASS	Heating/Cooling	A / A++	A+ / A++	A+ / A++	A+ / A++	A+ / A++	-	-
AIRFLOW (l/s)	Lo-Mi-Hi	167-200-233	200-242-283	242-300-350	242-300-383	383-466-533	466-566-616	491-591-666
	Gas	12.7 (1/2")	12.7 (1/2")	15.88 (5/8")	15.88 (5/8")	15.88 (5/8")	15.88 (5/8")	15.88 (5/8")
PIPE SIZE mm (in)	Liquid	6.35 (1/4")	6.35 (1/4")	9.52 (3/8")	9.52 (3/8")	9.52 (3/8")	9.52 (3/8")	9.52 (3/8")
	EXTERNAL STATIC PRESSURE (Pa)	35-50-70-100-150	35-50-70-100-150	35-50-70-100-150	35-50-70-100-150	40-50-70-100-150	40-50-70-100-150	40-50-70-100-150
SOUND PRESSURE LEVEL (dBA)	Lo-Mi-Hi	24-29-32	27-33-35	26-32-35	26-32-37	31-36-39	35-39-41	34-38-41
SOUND POWER LEVEL (dBA)		54	58	56	58	62	66	66
DIMENSIONS (mm)	Width x Depth x Height	900 x 732 x 250	900 x 732 x 250	1100 x 732 x 250	1100 x 732 x 250	1400 x 732 x 250	1400 x 732 x 250	1600 x 732 x 250
WEIGHT (kg)		25	26.5	29.5	29.5	37	38	42
ELECTRICAL SUPPLY		Fed by Outdoor Unit	Fed by Outdoor Unit	Fed by Outdoor Unit	Fed by Outdoor Unit	Fed by Outdoor	Fed by Outdoor	Fed by Outdoor
FUSE RATING (BS88) - HRC (A)		6	6	6	6	6	6	6
INTERCONNECTING CABLE No. CORES		4	4	4	4	4	4	4
WIRED REMOTE CONTROLLER REFERENCE		PAR-41MAA	PAR-41MAA	PAR-41MAA	PAR-41MAA	PAR-41MAA	PAR-41MAA	PAR-41MAA

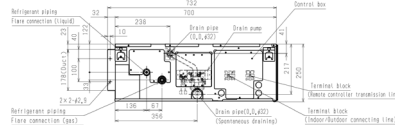
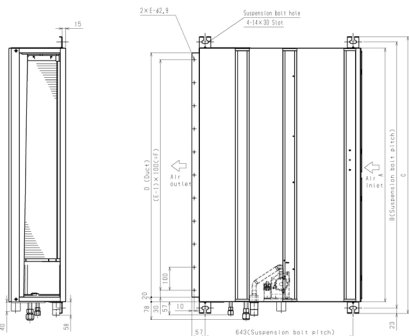
PUZ-ZM OUTDOOR UNITS		PUZ-ZM35VKA2	PUZ-ZM50VKA2	PUZ-ZM60VHA2	PUZ-ZM71VHA2	PUZ-ZM100VDA	PUZ-ZM125VDA	PUZ-ZM140VDA
SOUND PRESSURE LEVEL (dBA)	Heating/Cooling	46 / 44	46 / 44	49 / 47	49 / 47	48 / 44	50 / 47	51 / 49
SOUND POWER LEVEL (dBA)	Cooling	65	65	67	67	63	66	68
WEIGHT (kg)		46	46	67	67	107	107	107
DIMENSIONS (mm)	Width x Depth x Height	809 x 300 x 630	809 x 300 x 630	950 x 330 + 25 x 943	950 x 330 + 25 x 943	1110 x 460 + 45 x 870	1110 x 460 + 45 x 870	1110 x 460 x 870
ELECTRICAL SUPPLY		220-240v, 50Hz	220-240v, 50Hz	220-240v, 50Hz	220-240v, 50Hz	220-240v, 50Hz	220-240v, 50Hz	220-240v, 50Hz
PHASE		Single	Single	Single	Single	Single	Single	Single
SYSTEM POWER INPUT (kW)	Heating/Cooling (nominal)	0.911 / 0.837	1.363 / 1.190	1.590 / 1.487	1.904 / 1.775	2.546 / 2.262	3.764 / 3.379	4.103 / 3.702
	Heating/Cooling (UK)	0.76 / 0.76	1.15 / 1.05	1.30 / 1.37	1.70 / 1.50	1.859 / 1.945	2.748 / 2.906	2.995 / 3.184
STARTING CURRENT (A)		4.3	4.3	5.3	5.3	11.9	11.9	11.9 / 3.5
SYSTEM RUNNING CURRENT (A)	Heating/Cooling [MAX]	3.28 / 3.30 [14.2]	5.01 / 4.57 [14.4]	5.65 / 5.96 [20.9]	7.37 / 6.54 [20.9]	11.776 / 10.462 [28.8]	17.41 / 15.63 [28.8]	18.98 / 17.123 [11.6]
FUSE RATING (BS88) - HRC (A)		16	16	25	25	32	32	40
MAINS CABLE No. CORES		3	3	3	3	3	3	3
MAX PIPE LENGTH (m)		50	50	55	55	100	100	100
MAX HEIGHT DIFFERENCE (m)		30	30	30	30	30	30	30
CHARGE REFRIGERANT (kg) / CO ₂ EQUIVALENT (t) - R32 (GWP 675) - 30m		2.00 / 1.35 (30m)	2.00 / 1.35 (30m)	2.80 / 1.89 (30m)	2.80 / 1.89 (30m)	3.6 / 2.43 (40m)	3.6 / 2.43 (40m)	3.6 / 2.43 (40m)
MAX ADDITIONAL REFRIGERANT (kg) / CO ₂ EQUIVALENT (t) - R32 (GWP 675)		0.30 / 0.20	0.30 / 0.20	0.80 / 0.54	0.80 / 0.54	2.4 / 1.62	2.4 / 1.62	2.4 / 1.62

PEAD-M35/50/60/71/100/125/140JA2 DIMENSIONS

FRONT VIEW

UPPER VIEW

SIDE VIEW



Model	A	B	C	D	E	F
PEAD-M35,50JA2	900	954	1000	860	9	800
PEAD-M60,71JA2	1100	1154	1200	1060	11	1000
PEAD-M100,125JA2	1400	1454	1500	1360	14	1300
PEAD-M140JA2	1600	1654	1700	1560	16	1500



Telephone: 01707 282880
email: air.conditioning@meuk.mee.com
les.mitsubishielectric.co.uk



Mitsubishi Electric Living
Environmental Systems UK



Mitsubishi Electric
Cooling and Heating UK



mitsubishielectricuk_les



Mitsubishi Electric Living
Environmental Systems UK



thehub.mitsubishielectric.co.uk

UNITED KINGDOM Mitsubishi Electric Europe Living Environment Systems Division, Travellers Lane, Hatfield, Hertfordshire, AL10 8XB, England. Telephone: 01707 282880
IRELAND Mitsubishi Electric Europe, Westgate Business Park, Ballymount, Dublin 24, Ireland. Telephone: (01) 419 8800 International code: (003531)

Country of origin: United Kingdom - Italy - Turkey - Japan - Thailand - Malaysia. ©Mitsubishi Electric Europe 2024. Mitsubishi and Mitsubishi Electric are trademarks of Mitsubishi Electric Europe B.V. The company reserves the right to make any variation in technical specification to the equipment described, or to withdraw or replace products without prior notification or public announcement. Mitsubishi Electric is constantly developing and improving its products. All descriptions, illustrations, drawings and specifications in this publication present only general particulars and shall not form part of any contract. All goods are supplied subject to the Company's General Conditions of Sale, a copy of which is available on request. Third-party product and brand names may be trademarks or registered trademarks of their respective owners.

Note: The fuse rating is for guidance only and please refer to the relevant databook for detailed specification. It is the responsibility of a qualified electrician/electrical engineer to select the correct cable size and fuse rating based on current regulation and site specific conditions. Mitsubishi Electric's air conditioning equipment and heat pump systems contain a fluorinated greenhouse gas, R410A (GWP:2088), R290 (GWP:3), R32 (GWP:675), R407C (GWP:1774), R134a (GWP:1430), R513A (GWP:631), R454B (GWP:466), R454C (GWP:148), R1234ze (GWP:7) or R1234yf (GWP:4). *These GWP values are based on Regulation (EU) No 517/2014 from IPCC 4th edition. In case of Regulation (EU) No.626/2011 from IPCC 3rd edition, these are as follows. R410A (GWP:1975), R32 (GWP:550), R407C (GWP:1650) or R134a (GWP:1300).

Effective as of May 2024



PEAD-M R32

Ceiling Concealed Ducted System

Power Inverter Heat Pump (Three Phase)

Mr. SLIM™

The **PEAD-M Power Inverter** range is a ceiling concealed ducted system that blends a host of outstanding features with an unobtrusive design (only 250mm height) for easy installation and maintenance.

Offering high seasonal efficiency, advanced control options and extended pipe runs, the units also come with a wide range of external static pressure settings, making this range an extremely flexible solution for applications such as light commercial, schools and warehousing.

R32



Key Features & Benefits:

- Increased comfort levels through advanced airflow and smart defrost features
- Compact, single fan outdoor unit chassis across the whole range, for unobtrusive and discreet installation
- 100m pipe run (size 100-140), increasing application capability
- Energy usage display available as standard with the PAR-41MAA controller
- Improved efficiency through new fan motor
- Full heating capacity down to -3°C
- Drain pump included as standard
- Compatible with Plasma Quad Connect - an innovative, bolt-on air purifying device which neutralises viruses, bacteria, allergens, PM2.5, mould and dust



R32



PEAD-M INDOOR UNITS		PEAD-M100JA	PEAD-M125JA	PEAD-M140JA
CAPACITY (kW)	Heating (nominal)	11.2 (2.7-14.0)	14.0 (3.2-16.0)	16.0 (3.70-18.0)
	Cooling (nominal)	9.5 (4.9-11.4)	12.5 (5.1-14.0)	13.4 (5.40-15.0)
	Heating (UK)	8.4 (2.025-10.5)	10.5 (2.4-12.0)	12.0 (2.775-13.5)
	Cooling (UK)	9.025 (4.655-10.83)	11.88 (4.85-13.3)	12.73 (5.13-14.25)
SHF (nominal)		0.82	0.78	0.77
COP / EER (nominal)		4.40 / 4.20	3.72 / 3.70	3.90 / 3.62
SCOP (ηsh) / SEER (ηsc) (BS EN14825)		4.4 / 6.6	4.18 (164.4%) / 6.68 (264.4%)	4.15 (163.1%) / 6.50 (256.8%)
ErP ENERGY EFFICIENCY CLASS	Heating/Cooling	A+ / A++	-	-
AIRFLOW (l/s)	Lo-Mi-Hi	383-466-533	466-566-616	491-591-666
PIPE SIZE mm (in)	Gas	15.88 (5/8")	15.88 (5/8")	15.88 (5/8")
	Liquid	9.52 (3/8")	9.52 (3/8")	9.52 (3/8")
EXTERNAL STATIC PRESSURE (Pa)		40-50-70-100-150	40-50-70-100-150	40-50-70-100-150
SOUND PRESSURE LEVEL (dBA)	Lo-Mi-Hi	31-36-39	35-39-41	34-38-41
SOUND POWER LEVEL (dBA)		62	66	66
DIMENSIONS (mm)	Width x Depth x Height	1400 x 732 x 250	1400 x 732 x 250	1600 x 732 x 250
WEIGHT (kg)		37	38	42
ELECTRICAL SUPPLY		Fed by Outdoor	Fed by Outdoor	Fed by Outdoor
FUSE RATING (BS88) - HRC (A)		6	6	6
INTERCONNECTING CABLE No. CORES		4	4	4
WIRED REMOTE CONTROLLER REFERENCE		PAR-41MAA	PAR-41MAA	PAR-41MAA
PUZ-ZM OUTDOOR UNITS		PUZ-ZM100YDA ③	PUZ-ZM125YDA ③	PUZ-ZM140YDA ③
SOUND PRESSURE LEVEL (dBA)	Heating/Cooling	48 / 44	50 / 47	51 / 49
SOUND POWER LEVEL (dBA)	Cooling	63	66	68
WEIGHT (kg)		114	116	121
DIMENSIONS (mm)	Width x Depth x Height	1110 x 460 + 45 x 870	1110 x 460 + 45 x 870	1110 x 460 + 45 x 870
ELECTRICAL SUPPLY		380-415v, 50Hz	380-415v, 50Hz	380-415v, 50Hz
PHASE		Three	Three	Three
SYSTEM POWER INPUT (kW)	Heating/Cooling (nominal)	2.546 / 2.262	3.764 / 3.379	4.103 / 3.702
	Heating/Cooling (UK)	1.859 / 1.945	2.748 / 2.906	2.995 / 3.184
STARTING CURRENT (A)		3.5	3.5	3.5
SYSTEM RUNNING CURRENT (A)	Heating/Cooling [MAX]	3.91 / 3.473 [10.3]	5.78 / 5.188 [11.3]	6.30 / 5.684 [32.6]
FUSE RATING (BS88) - HRC (A)		16	16	16
MAINS CABLE No. CORES		5	5	5
MAX PIPE LENGTH (m)		100	100	100
MAX HEIGHT DIFFERENCE (m)		30	30	30
CHARGE REFRIGERANT (kg) / CO ₂ EQUIVALENT (t) - R32 (GWP 675) - 30m		3.6 / 2.43 (40m)	3.6 / 2.43 (40m)	3.6 / 2.43 (40m)
MAX ADDITIONAL REFRIGERANT (kg) / CO ₂ EQUIVALENT (t) - R32 (GWP 675)		2.4 / 1.62	2.4 / 1.62	2.4 / 1.62

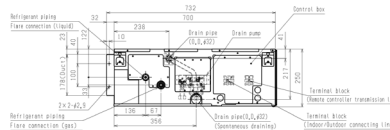
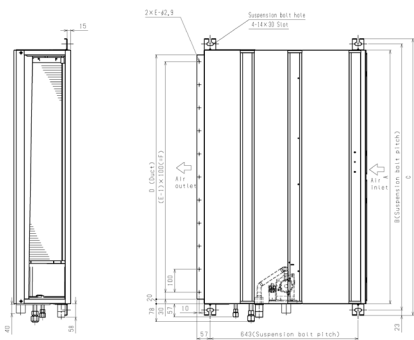
③ Three Phase

PEAD-M35/50/60/71/100/125/140JA2 DIMENSIONS

FRONT VIEW

UPPER VIEW

SIDE VIEW



Model	A	B	C	D	E	F
PEAD-M100,125JA2	1400	1454	1500	1360	14	1300
PEAD-M140JA2	1600	1654	1700	1560	16	1500



Telephone: 01707 282880
email: air.conditioning@meuk.mee.com
les.mitsubishielectric.co.uk



Mitsubishi Electric Living
Environmental Systems UK



Mitsubishi Electric
Cooling and Heating UK



[mitsubishielectricuk_les](https://www.instagram.com/mitsubishielectricuk_les)



Mitsubishi Electric Living
Environmental Systems UK



thehub.mitsubishielectric.co.uk

UNITED KINGDOM Mitsubishi Electric Europe Living Environment Systems Division, Travellers Lane, Hatfield, Hertfordshire, AL10 8XB, England. Telephone: 01707 282880
IRELAND Mitsubishi Electric Europe, Westgate Business Park, Ballymount, Dublin 24, Ireland. Telephone: (01) 419 8800 International code: (003531)

Country of origin: United Kingdom - Italy - Turkey - Japan - Thailand - Malaysia. ©Mitsubishi Electric Europe 2024. Mitsubishi and Mitsubishi Electric are trademarks of Mitsubishi Electric Europe B.V. The company reserves the right to make any variation in technical specification to the equipment described, or to withdraw or replace products without prior notification or public announcement. Mitsubishi Electric is constantly developing and improving its products. All descriptions, illustrations, drawings and specifications in this publication present only general particulars and shall not form part of any contract. All goods are supplied subject to the Company's General Conditions of Sale, a copy of which is available on request. Third-party product and brand names may be trademarks or registered trademarks of their respective owners.

Note: The fuse rating is for guidance only and please refer to the relevant databook for detailed specification. It is the responsibility of a qualified electrician/electrical engineer to select the correct cable size and fuse rating based on current regulation and site specific conditions. Mitsubishi Electric's air conditioning equipment and heat pump systems contain a fluorinated greenhouse gas, R410A (GWP:2088), R290 (GWP:3), R32 (GWP:675), R407C (GWP:1774), R134a (GWP:1430), R513A (GWP:631), R454B (GWP:466), R454C (GWP:148), R1234ze (GWP:7) or R1234yf (GWP:4). *These GWP values are based on Regulation (EU) No 517/2014 from IPCC 4th edition. In case of Regulation (EU) No.626/2011 from IPCC 3rd edition, these are as follows. R410A (GWP:1975), R32 (GWP:550), R407C (GWP:1650) or R134a (GWP:1300).

Effective as of May 2024

