

PLA-ZM R32

4-Way Blow Ceiling Cassette System

Power Inverter Heat Pump (Single Phase)

Mr. SLIM™

The **PLA-ZM Power Inverter range** is a ceiling cassette system that blends a host of outstanding features with a sophisticated, streamlined design.

Offering high seasonal efficiency, advanced control options and extended pipe runs, this range is an extremely flexible choice for a broad number of commercial applications.



Key Features & Benefits:

- Increased comfort levels through advanced airflow and smart defrost features
- Compact, single fan outdoor unit chassis across the whole range, for unobtrusive and discreet installation
- 100m pipe run (size 100-140), increasing application capability
- 14°C set point option; ideal for applications where a specialist ambient condition is required (requires PAR-41MAA or PAR-SL101A-E controller)
- Energy usage display available as standard with the PAR-41MAA controller
- Optional 3D Total Airflow casement to allow 360° directional delivery of air (requires PAR-41MAA or PAR-SL101A-E controller)
- Optional 3D i-see sensor grille (PLP-6EAE) provides customised comfort by automatically monitoring room occupancy, position and body temperatures
- Optional filter lowering operation down to 4m (PLP-6EAJ), allowing for easier maintenance
- Optional black grille (PLP-6EA-B), ideal for applications with exposed ceilings or stylish aesthetics
- Optional V Blocking filter (PAC-SK53KF-E) provides in-room air purification, neutralises viruses, bacteria, allergens, dust and mould
- Compatible with Plasma Quad Connect - an innovative, bolt-on air purifying device which neutralises viruses, bacteria, allergens, PM2.5, mould and dust (PAC-SK51FT-E)



Air Conditioning Product Information

PLA-ZM R32 4-Way Blow Ceiling Cassette System Power Inverter Heat Pump (Single Phase)

R32

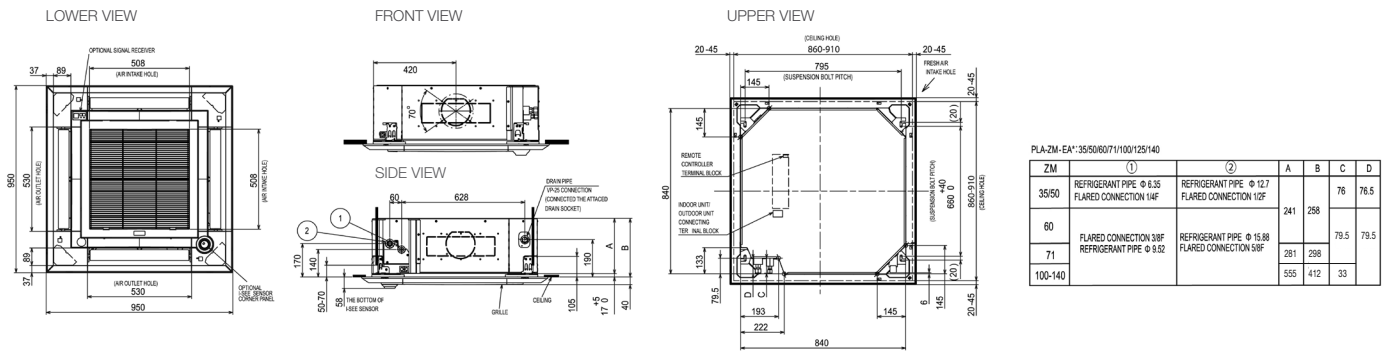
POWER INVERTER



PLA-ZM INDOOR UNITS		PLA-ZM35EA2	PLA-ZM50EA2	PLA-ZM60EA2	PLA-ZM71EA2	PLA-ZM100EA2	PLA-ZM125EA2	PLA-ZM140EA2
CAPACITY (kW)	Heating (nominal)	4.1 (1.6-5.2)	6.0 (2.5-7.3)	7.0 (2.8-8.2)	8.0 (3.5-10.2)	11.2 (2.7-14.0)	14 (3.2-16.0)	16 (3.7-18.0)
	Cooling (nominal)	3.6 (1.6-4.5)	5.0 (2.3-5.6)	6.1 (2.7-6.5)	7.1 (3.3-8.1)	9.5 (4.9-11.4)	12.5 (5.1-14.0)	13.4 (5.4-15.0)
	Heating (UK)	3.5 (1.35-4.4)	5.1 (2.15-6.2)	6.0 (2.38-6.97)	6.8 (3.0-8.65)	7.95 (1.92-9.94)	9.94 (2.27-11.36)	11.36 (2.63-12.78)
	Cooling (UK)	3.3 (1.45-4.15)	4.6 (2.1-5.15)	5.6 (2.48-5.98)	6.55 (3.05-7.45)	9.03 (4.66-10.83)	11.88 (4.85-13.3)	12.73 (5.13-14.25)
SHF (nominal)		0.95	0.85	0.77	0.72	0.72	0.7	0.7
COP / EER (nominal)		5.00 / 5.10	4.40 / 4.52	4.10 / 4.20	4.40 / 4.30	4.2 / 4.4	3.6 / 3.6	3.5 / 3.7
SCOP (ηsh) / SEER ηsc (BS EN14825)		4.70 / 7.50	4.90 / 7.60	4.60 / 7.20	4.80 / 7.60	4.8/7.8	4.73 (186.2) / 7.48 (296.2)	4.63 (182.3) / 7.4 (292.8)
ERP ENERGY EFFICIENCY CLASS	Heating/Cooling	A++ / A++	A++ / A++	A++ / A++	A++ / A++	A++ / A++	-	-
AIRFLOW (l/s)	Lo-Mi-Mi2-Hi	183-217-250-267	200-233-267-300	200-233-267-300	283-317-350-383	317-367-417-467	350-400-433-483	400-433-483-533
PIPE SIZE mm (in)	Gas/ Liquid	12.7 (1/2) / 6.35 (1/4")	12.7 (1/2) / 6.35 (1/4")	15.88 (5/8") / 9.52 (3/8")	15.88 (5/8") / 9.52 (3/8")	15.88 (5/8") / 9.52 (3/8")	15.88 (5/8") / 9.52 (3/8")	15.88 (5/8") / 9.52 (3/8")
SOUND PRESSURE LEVEL (dBA)	Lo-Mi-Mi2-Hi	26-28-29-31	27-29-31-32	27-29-31-32	28-30-33-36	31-34-37-40	33-36-39-41	36-39-42-44
SOUND POWER LEVEL (dBA)		51	54	54	57	61	62	65
DIMENSIONS (mm)	Width x Depth x Height (Grille)	840 (850) x 840 (850) x 258 (40)	840 (850) x 840 (850) x 258 (40)	840 (850) x 840 (850) x 258 (40)	840 (850) x 840 (850) x 298 (40)	840 (850) x 840 (850) x 298 (40)	840 (850) x 840 (850) x 298 (40)	840 (850) x 840 (850) x 298 (40)
WEIGHT (kg)	Unit / Grille	21 / 5	21 / 5	21 / 5	24 / 5	24/5	26/5	26/5
ELECTRICAL SUPPLY		Fed by Outdoor Unit	Fed by Outdoor Unit	Fed by Outdoor Unit	Fed by Outdoor Unit	Fed by Outdoor Unit	Fed by Outdoor Unit	Fed by Outdoor Unit
FUSE RATING (BS88) - HRC (A)		6	6	6	6	6	6	6
INTERCONNECTING CABLE No. CORES		4	4	4	4	4	4	4
GRILLE REFERENCE	White	PLP-6EA	PLP-6EA	PLP-6EA	PLP-6EA	PLP-6EA	PLP-6EA	PLP-6EA
	Black Satin	PLP-6EA-B	PLP-6EA-B	PLP-6EA-B	PLP-6EA-B	PLP-6EA-B	PLP-6EA-B	PLP-6EA-B
V BLOCKING FILTER		PAC-SK53KF-E	PAC-SK53KF-E	PAC-SK53KF-E	PAC-SK53KF-E	PAC-SK53KF-E	PAC-SK53KF-E	PAC-SK53KF-E
WIRED REMOTE CONTROLLER REFERENCE		PAR-41MAA	PAR-41MAA	PAR-41MAA	PAR-41MAA	PAR-41MAA	PAR-41MAA	PAR-41MAA
WIRELESS REMOTE CONTROLLER REFERENCE		PAR-SL101A-E	PAR-SL101A-E	PAR-SL101A-E	PAR-SL101A-E	PAR-SL101A-E	PAR-SL101A-E	PAR-SL101A-E

PUZ-ZM OUTDOOR UNITS		PUZ-ZM35VKA2	PUZ-ZM50VKA2	PUZ-ZM60VHA2	PUZ-ZM71VHA2	PUZ-ZM100VDA	PUZ-ZM125VDA	PUZ-ZM140VDA
SOUND PRESSURE LEVEL (dBA)	Heating/Cooling	46 / 44	46 / 44	49 / 47	49 / 47	48 / 44	50 / 47	51 / 49
SOUND POWER LEVEL (dBA)	Cooling	65	65	67	67	63	66	68
WEIGHT (kg)		46	46	67	67	107	107	107
DIMENSIONS (mm)	Width x Depth x Height	809 x 300 x 630	809 x 300 x 630	950 x 330 + 25 x 943	950 x 330 + 25 x 943	1110 x 460 + 45 x 870	1110 x 460 + 45 x 870	1110 x 460 + 45 x 870
ELECTRICAL SUPPLY		220-240v, 50Hz	220-240v, 50Hz	220-240v, 50Hz	220-240v, 50Hz	220-240v, 50Hz	220-240v, 50Hz	220-240v, 50Hz
PHASE		Single	Single	Single	Single	Single	Single	Single
SYSTEM POWER INPUT (kW)	Heating/Cooling (nominal)	0.820 / 0.705	1.363 / 1.106	1.707 / 1.452	1.818 / 1.651	2.667 / 2.16	3.889 / 3.473	4.572 / 3.622
	Heating/Cooling (UK)	0.73 / 0.59	1.21 / 0.94	1.43 / 1.15	1.61 / 1.39	2.11 / 1.79	3.07 / 2.88	3.61 / 3.01
STARTING CURRENT (A)		4.3	4.3	5.3	5.3	11.9	11.9	11.9
SYSTEM RUNNING CURRENT (A)	Heating/Cooling [MAX]	3.89 / 3.51 [13.2]	6.05 / 5.00 [13.2]	7.39 / 6.31 [19.2]	7.79 / 7.06 [19.3]	12.35 / 9.99 [27]	17.99 / 16.05 [27]	21.14 / 17.64 [30.7]
FUSE RATING (BS88) - HRC (A)		16	16	25	25	32	32	40
MAINS CABLE No. CORES		3	3	3	3	3	3	3
MAX PIPE LENGTH (m)		50	50	55	55	100	100	100
MAX HEIGHT DIFFERENCE (m)		30	30	30	30	30	30	30
CHARGE REFRIGERANT (kg) / CO ₂ EQUIVALENT (t) - R32 (GWP 675) - 30m		2.00 / 1.35 (30m)	2.00 / 1.35 (30m)	2.80 / 1.89 (30m)	2.80 / 1.89 (30m)	3.6 / 2.43 (40m)	3.6 / 2.43 (40m)	3.6 / 2.43 (40m)
MAX ADDITIONAL REFRIGERANT (kg) / CO ₂ EQUIVALENT (t) - R32 (GWP 675)		0.30 / 0.20	0.30 / 0.20	0.80 / 0.54	0.80 / 0.54	2.4 / 1.62	2.4 / 1.62	2.4 / 1.62

PLA-ZM35/50/60/71/100/125/140EA2 DIMENSIONS



Telephone: 01707 282880
email: air.conditioning@meuk.mee.com
les.mitsubishielectric.co.uk



UNITED KINGDOM Mitsubishi Electric Europe Living Environment Systems Division, Travellers Lane, Hatfield, Hertfordshire, AL10 8XB, England. Telephone: 01707 282880
IRELAND Mitsubishi Electric Europe, Westgate Business Park, Ballymount, Dublin 24, Ireland. Telephone: (01) 419 8800 International code: (0035371)

Country of origin: United Kingdom - Italy - Turkey - Japan - Thailand - Malaysia. ©Mitsubishi Electric Europe 2024. Mitsubishi and Mitsubishi Electric are trademarks of Mitsubishi Electric Europe B.V. The company reserves the right to make any variation in technical specification to the equipment described, or to withdraw or replace products without prior notification or public announcement. Mitsubishi Electric is constantly developing and improving its products. All descriptions, illustrations, drawings and specifications in this publication present only general particulars and shall not form part of any contract. All goods are supplied subject to the Company's General Conditions of Sale, a copy of which is available on request. Third-party product and brand names may be trademarks or registered trademarks of their respective owners.

Note: The fuse rating is for guidance only and please refer to the relevant databook for detailed specification. It is the responsibility of a qualified electrician/electrical engineer to select the correct cable size and fuse rating based on current regulation and site specific conditions. Mitsubishi Electric's air conditioning equipment and heat pump systems contain a fluorinated greenhouse gas, R410A (GWP:2088), R290 (GWP:3), R32 (GWP:675), R407C (GWP:1774), R134a (GWP:1430), R513A (GWP:631), R454B (GWP:466), R454C (GWP:148), R1234ze (GWP:7) or R1234yf (GWP:4). *These GWP values are based on Regulation (EU) No 517/2014 from IPCC 4th edition. In case of Regulation (EU) No.626/2011 from IPCC 3rd edition, these are as follows. R410A (GWP:1975), R32 (GWP:550), R407C (GWP:1650) or R134a (GWP:1300).

Effective as of May 2024



PLA-ZM R32

4-Way Blow Ceiling Cassette System

Power Inverter Heat Pump (Three Phase)

Mr. SLIM™

The **PLA-ZM Power Inverter range** is a ceiling cassette system that blends a host of outstanding features with a sophisticated, streamlined design.

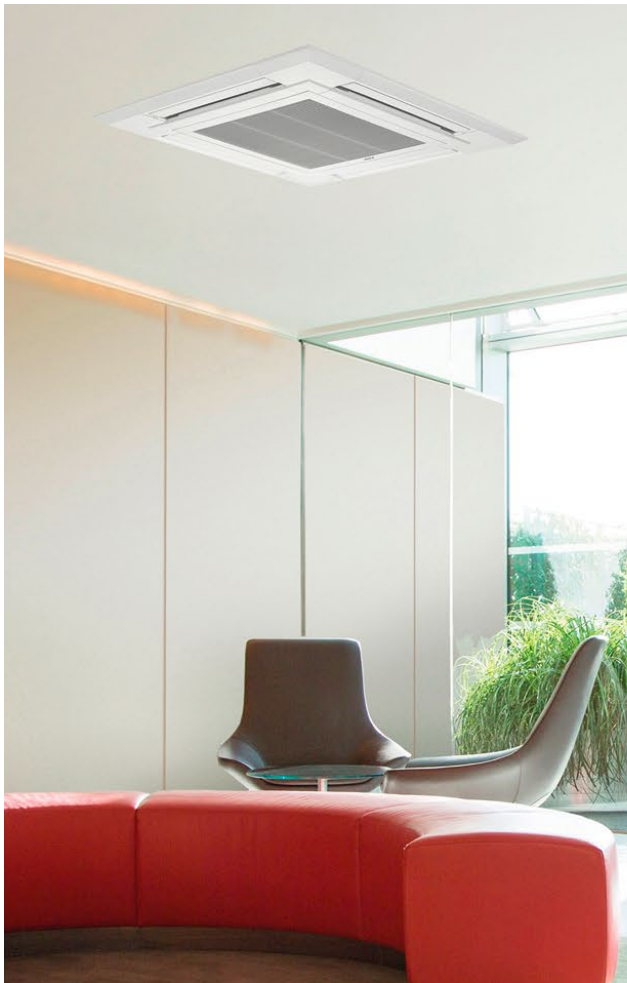
Offering high seasonal efficiency, advanced control options and extended pipe runs, this range is an extremely flexible choice for a broad number of commercial applications.

R32



Key Features & Benefits:

- Increased comfort levels through advanced airflow and smart defrost features
- Compact, single fan outdoor unit chassis across the whole range, for unobtrusive and discreet installation
- 100m pipe run (size 100-140), increasing application capability
- 14°C set point option; ideal for applications where a specialist ambient condition is required (requires PAR-41MAA or PAR-SL101A-E controller)
- Energy usage display available as standard with the PAR-41MAA controller
- Optional 3D Total Airflow casement to allow 360° directional delivery of air (requires PAR-41MAA or PAR-SL101A-E controller)
- Optional 3D i-see sensor grille (PLP-6EAE) provides customised comfort by automatically monitoring room occupancy, position and body temperatures
- Optional filter lowering operation down to 4m (PLP-6EAJ), allowing for easier maintenance
- Optional black grille (PLP-6EA-B), ideal for applications with exposed ceilings or stylish aesthetics
- Optional V Blocking filter (PAC-SK53KF-E) provides in-room air purification, neutralises viruses, bacteria, allergens, dust and mould
- Compatible with Plasma Quad Connect - an innovative, bolt-on air purifying device which neutralises viruses, bacteria, allergens, PM2.5, mould and dust (PAC-SK51FT-E)



Air Conditioning Product Information

PLA-ZM R32 4-Way Blow Ceiling Cassette System Power Inverter Heat Pump (Three Phase)

R32

POWER INVERTER



PLP-6EA



PLP-6EA-B

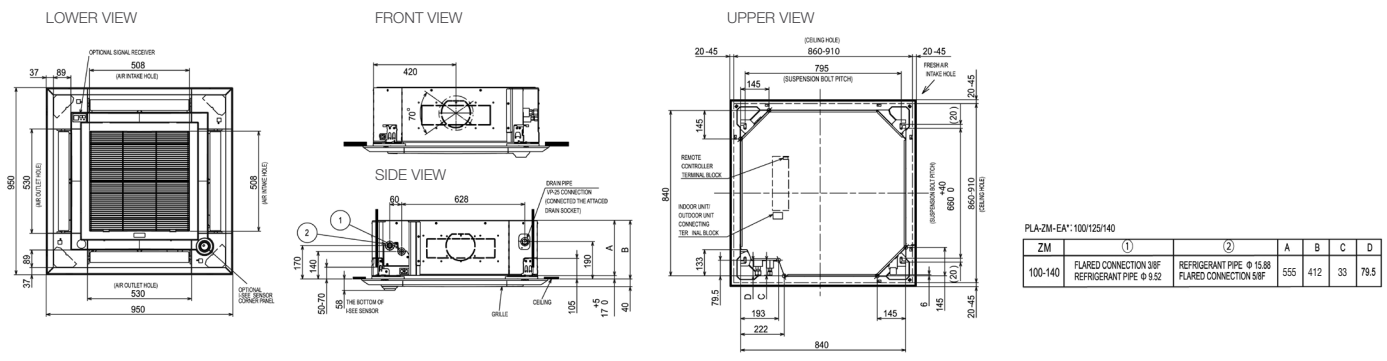


PLA-ZM INDOOR UNITS		PLA-ZM100EA2	PLA-ZM125EA2	PLA-ZM140EA2
CAPACITY (kW)	Heating (nominal)	11.2 (2.7-14.0)	14 (3.2-16.0)	16 (3.7-18.0)
	Cooling (nominal)	9.5 (4.9-11.4)	12.5 (5.1-14.0)	13.4 (5.4-15.0)
	Heating (UK)	7.95 (1.92-9.94)	9.94 (2.27-11.36)	11.36 (2.63-12.78)
	Cooling (UK)	9.03 (4.66-10.83)	11.88 (4.85-13.3)	12.73 (5.13-14.25)
SHF (nominal)		0.77	0.7	0.7
COP / EER (nominal)		4.2 / 4.4	3.6 / 3.6	3.5 / 3.7
SCOP (rsh) / SEER (rsc) (BS EN14825)		4.8 / 7.6	4.73 (186.2) / 7.43 (294.1)	4.63 (182.3) / 7.35 (290.9)
ErP ENERGY EFFICIENCY CLASS	Heating/Cooling	A++ / A++	-	-
AIRFLOW (l/s)	Lo-Mi-Mi2-Hi	317-367-417-467	350-400-433-483	400-433-483-533
PIPE SIZE mm (in)	Gas/Liquid	15.88 (5/8") / 9.52 (3/8")	15.88 (5/8") / 9.52 (3/8")	15.88 (5/8") / 9.52 (3/8")
SOUND PRESSURE LEVEL (dBA)	Lo-Mi-Mi2-Hi	31-34-37-40	33-36-39-41	36-39-42-44
SOUND POWER LEVEL (dBA)		61	62	65
DIMENSIONS (mm)	Width x Depth x Height (Grille)	840 (950) x 840 (950) x 298 (40)	840 (950) x 840 (950) x 298 (40)	840 (950) x 840 (950) x 298 (40)
WEIGHT (kg)	Unit / Grille	24 / 5	26 / 5	26 / 5
ELECTRICAL SUPPLY		Fed by Outdoor Unit	Fed by Outdoor Unit	Fed by Outdoor Unit
FUSE RATING (BS88) - HRC (A)		6	6	6
INTERCONNECTING CABLE No. CORES		4	4	4
GRILLE REFERENCE	White	PLP-6EA	PLP-6EA	PLP-6EA
	Black Satin	PLP-6EA-B	PLP-6EA-B	PLP-6EA-B
V BLOCKING FILTER		PAC-SK53KF-E	PAC-SK53KF-E	PAC-SK53KF-E
WIRED REMOTE CONTROLLER REFERENCE		PAR-41MAA	PAR-41MAA	PAR-41MAA
WIRELESS REMOTE CONTROLLER REFERENCE		PAR-SL101A-E	PAR-SL101A-E	PAR-SL101A-E

PUZ-ZM OUTDOOR UNITS		PUZ-ZM100YDA ③	PUZ-ZM125YDA ③	PUZ-ZM140YDA ③
SOUND PRESSURE LEVEL (dBA)	Heating/Cooling	48 / 44	50 / 47	51 / 49
	Cooling	63	66	68
SOUND POWER LEVEL (dBA)		114	116	121
WEIGHT (kg)		114	116	121
DIMENSIONS (mm)	Width x Depth x Height	1110 x 460 + 45 x 870	1110 x 460 + 45 x 870	1110 x 460 + 45 x 870
ELECTRICAL SUPPLY		380-415v, 50Hz	380-415v, 50Hz	380-415v, 50Hz
PHASE		Three	Three	Three
SYSTEM POWER INPUT (kW)	Heating/Cooling (nominal)	2.667 / 2.16	3.889 / 3.473	4.572 / 3.622
	Heating/Cooling (UK)	2.1 / 1.79	3.0 / 2.88	3.61 / 3.01
STARTING CURRENT (A)		3.5	3.5	3.5
SYSTEM RUNNING CURRENT (A)	Heating/Cooling (MAX)	4.09 / 3.32 [8.50]	5.97 / 5.32 [9.50]	7.0 / 5.56 [9.70]
FUSE RATING (BS88) - HRC (A)		16	16	16
MAINS CABLE No. CORES		5	5	5
MAX PIPE LENGTH (m)		100	100	100
MAX HEIGHT DIFFERENCE (m)		30	30	30
CHARGE REFRIGERANT (kg) / CO ₂ EQUIVALENT (t) - R32 (GWP 675) - 30m		3.6 / 2.43 (40m)	3.6 / 2.43 (40m)	3.6 / 2.43 (40m)
MAX ADDITIONAL REFRIGERANT (kg) / CO ₂ EQUIVALENT (t) - R32 (GWP 675)		2.4 / 1.62	2.4 / 1.62	2.4 / 1.62

③ Three Phase

PLA-ZM100/125/140EA2 DIMENSIONS



Telephone: 01707 282880
email: air.conditioning@meuk.mee.com
les.mitsubishielectric.co.uk



Mitsubishi Electric Living
Environmental Systems UK



Mitsubishi Electric
Cooling and Heating UK



[mitsubishielectricuk_les](https://www.instagram.com/mitsubishielectricuk_les)



Mitsubishi Electric Living
Environmental Systems UK



thehub.mitsubishielectric.co.uk

UNITED KINGDOM Mitsubishi Electric Europe Living Environment Systems Division, Travellers Lane, Hatfield, Hertfordshire, AL10 8XB, England. Telephone: 01707 282880
IRELAND Mitsubishi Electric Europe, Westgate Business Park, Ballymount, Dublin 24, Ireland. Telephone: (01) 419 8800 International code: (003531)

Country of origin: United Kingdom - Italy - Turkey - Japan - Thailand - Malaysia. ©Mitsubishi Electric Europe 2024. Mitsubishi and Mitsubishi Electric are trademarks of Mitsubishi Electric Europe B.V. The company reserves the right to make any variation in technical specification to the equipment described, or to withdraw or replace products without prior notification or public announcement. Mitsubishi Electric is constantly developing and improving its products. All descriptions, illustrations, drawings and specifications in this publication present only general particulars and shall not form part of any contract. All goods are supplied subject to the Company's General Conditions of Sale, a copy of which is available on request. Third-party product and brand names may be trademarks or registered trademarks of their respective owners.

Note: The fuse rating is for guidance only and please refer to the relevant databook for detailed specification. It is the responsibility of a qualified electrician/electrical engineer to select the correct cable size and fuse rating based on current regulation and site specific conditions. Mitsubishi Electric's air conditioning equipment and heat pump systems contain a fluorinated greenhouse gas, R410A (GWP:2088), R290 (GWP:3), R32 (GWP:675), R407C (GWP:1774), R134a (GWP:1430), R513A (GWP:631), R454B (GWP:466), R454C (GWP:148), R1234ze (GWP:7) or R1234yf (GWP:4). *These GWP values are based on Regulation (EU) No 517/2014 from IPCC 4th edition. In case of Regulation (EU) No.626/2011 from IPCC 3rd edition, these are as follows. R410A (GWP:1975), R32 (GWP:550), R407C (GWP:1650) or R134a (GWP:1300).

Effective as of May 2024

