

# Technical Bulletin

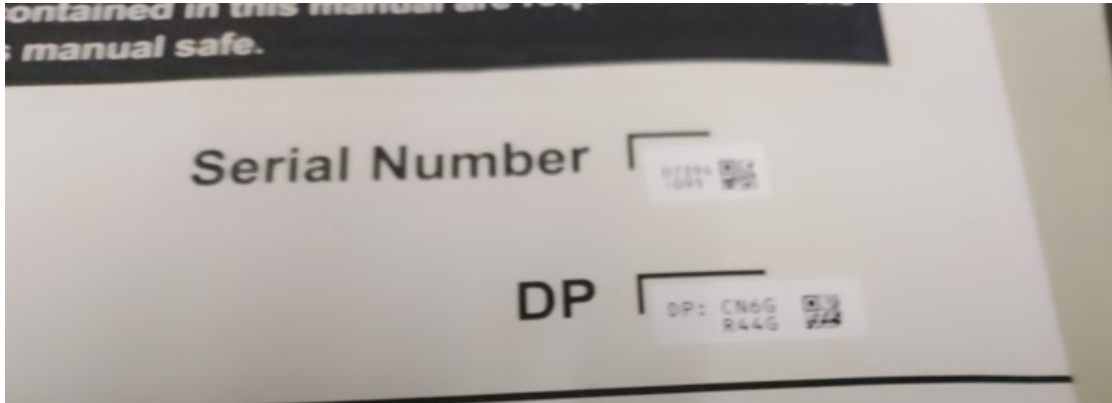
Number	M030
Subject	AE-200E-1/EW-50E-1 Passwords
Date	5 September 2024

### *AE-200E-1/EW-50E-1 Passwords*

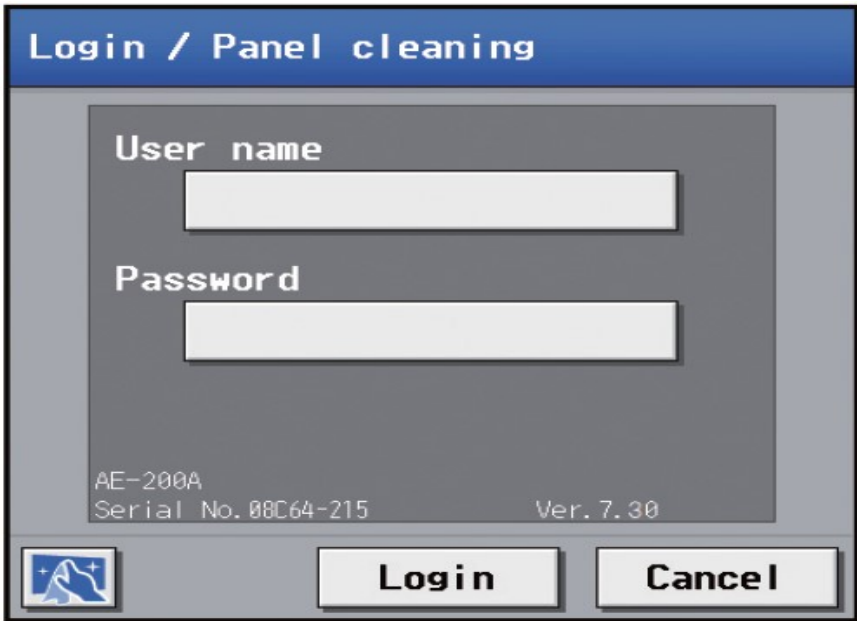
Please note that Mitsubishi Electric Central Controllers AE-200E/EW-50E have now been replaced by AE-200E-1/EW-50E-1 which **do not** support the generic Maintenance User "initial/init" username/password.

The default password is unique to each controller and can be found on the back cover of the installation manual so it is imperative to not dispose of the manual prior to setting up the controller.

Below is an example of an EW-50E-1 default password:

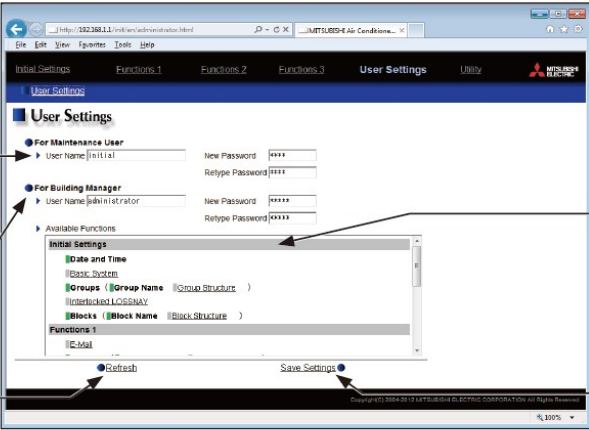


When entering the password you still type "initial" into the username (Maintenance User - "admin" for Building Manager) and then type "in" (lowercase) before the password so, in the above example, the username is "initial" and the password is "inCN6GR44G".



# Technical Bulletin

The password can still be changed in the User Settings (either onscreen or via the web browser).



The screenshot shows a web browser window displaying the 'User Settings' page. The page has a navigation bar with 'Initial Settings', 'Functions.1', 'Functions.2', 'Functions.3', 'User Settings', and 'Utility'. The 'User Settings' section is active, showing options for 'For Maintenance User' and 'For Building Manager'. Each option has fields for 'User Name' and 'New Password' (with a 'Retype Password' field). Below these are 'Available Functions' sections for 'Initial Settings', 'Functions.1', and 'Functions.2', each containing expandable items like 'Date and Time', 'Basic System', 'Groups', 'Interlocks', and 'Blocks'. At the bottom, there are 'Refresh' and 'Save Settings' buttons.

**Maintenance user name and password**  
User name and password can be changed.

**Building manager's user name and password**  
User name and password can be changed.

**Available functions**  
Select the available functions for building managers.

**Refresh**  
Click to import the settings from AE-200/AE-50.

**Save Settings**  
Click to save the changes made.