

ecodan[®]
Renewable Heating Technology



system selection wizard



LOGICOL
RUN BY ENGINEERS-FOR ENGINEERS

Designed especially for residential applications, the Mitsubishi Electric Ecodan with R32 Refrigerant, includes the multiple award winning range of Ultra Quiet AA chassis Ecodan monobloc air source heat pumps (6–11.2kW), they are designed specifically to suit the demands of the UK market.

The innovative, stylish and compact single fan outdoor units (up to 11.2kW) utilises advanced technologies to deliver improved efficiencies. Designed for a wide range of applications, the market leading low noise levels virtually eliminate the need for planning permission, maximises installation options and is a viable solution for all types of domestic requirements that the UK housing market demands.

Features and Benefits

- Built-in Melcloud enabled WiFi control also allows remote control, monitoring, maintenance and technical support
- Self-contained unit, only requiring water and electric connections
- No need for gas supply, flues or ventilation
- Single phase supply (three phase options available) with a low starting current
- Full Heating Capacity at low ambient temperatures
- Operates with outside temperatures as low as -25°C
- Hybrid function, for use with conventional boilers
- Coastal protection models available (ask for details)
- Optimised low ambient defrost control and operation down to -7°C
- Low maintenance and quiet operation
- 2-zone energy efficient space heating control
- Energy monitoring as standard
- Multiple unit connection and cascade function
- Available as a standalone, packaged or semi packaged system



"The perfect choice for the vast majority of UK homes, small retail outlets, surgeries, public sector and commercial buildings"

Max Output kW at External Ambient Temperature	-7°	-6°	-5°	-4°	-3°	-2°	-1°	0°	3°	5°	7°
PUZ-WM50VHA	5.5	5.45	5.5	5.3	5.2	5.1	5.0	4.9	5.3	5.5	5.6
PUZ-WM60VAA	6.6	6.7	6.8	6.9	7.0	7.2	7.3	7.5	7.7	7.8	7.9
PUZ-WM85VAA/YAA	8.8	8.9	9.0	9.25	9.5	9.6	9.7	9.8	9.9	10.3	10.5
PUZ-WM112VAA/YAA	12.1	12.2	12.3	12.4	12.4	12.5	12.5	12.6	13	13.3	13.5
PUZ-HWM140VHA/YHA	15.9	16.0	16.0	16.0	16.1	16.1	16.2	16.2	16.3	16.4	16.4

Max Output kW at External Ambient Temperature	-7°	-6°	-5°	-4°	-3°	-2°	-1°	0°	3°	5°	7°
PUZ-WM50VHA	5.1	5.1	5.1	5.1	5.1	5.1	5.1	5.1	5.2	5.3	5.4
PUZ-WM60VAA	5.9	6.0	6.0	6.0	6.0	6.0	6.0	6.0	6.5	7.0	7.4
PUZ-WM85VAA/YAA	8.5	8.6	8.7	8.8	8.9	9	9.1	9.2	9.5	9.7	9.8
PUZ-WM112VAA/YAA	11.2	11.3	11.4	11.5	11.6	11.7	11.8	11.9	12.0	12.5	13.0
PUZ-HWM140VHA/YHA	15.9	15.9	15.9	15.9	15.9	16.0	16.0	16.0	16.0	16.0	16.6

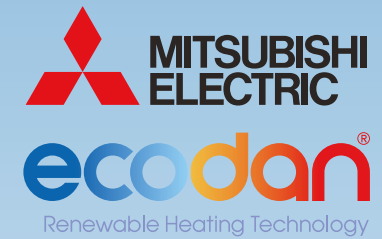
Max Output kW at External Ambient Temperature	-7°	-6°	-5°	-4°	-3°	-2°	-1°	0°	3°	5°	7°
PUZ-WM50VHA	4.4	4.5	4.6	4.7	4.7	4.8	4.8	4.9	5.0	5.0	5.0
PUZ-WM60VAA	5.5	5.6	5.7	5.8	5.9	5.9	6.0	6.0	6.2	6.8	7.1
PUZ-WM85VAA/YAA	8.0	8.2	8.3	8.4	8.5	8.6	8.7	8.8	9.0	9.2	9.4
PUZ-WM112VAA/YAA	10.0	10.1	10.3	10.5	10.8	11.0	11.1	11.2	11.5	11.6	11.7
PUZ-HWM140VHA/YHA	14.0	14.0	14.0	14.0	14.0	14.0	14.0	14.0	14.3	14.5	14.7

(All specifications and performance statistics, particularly part numbers are subject to change by the manufacturers. If in doubt, please speak to our technical services department).



LOGICCOOL
RUN BY ENGINEERS-FOR ENGINEERS

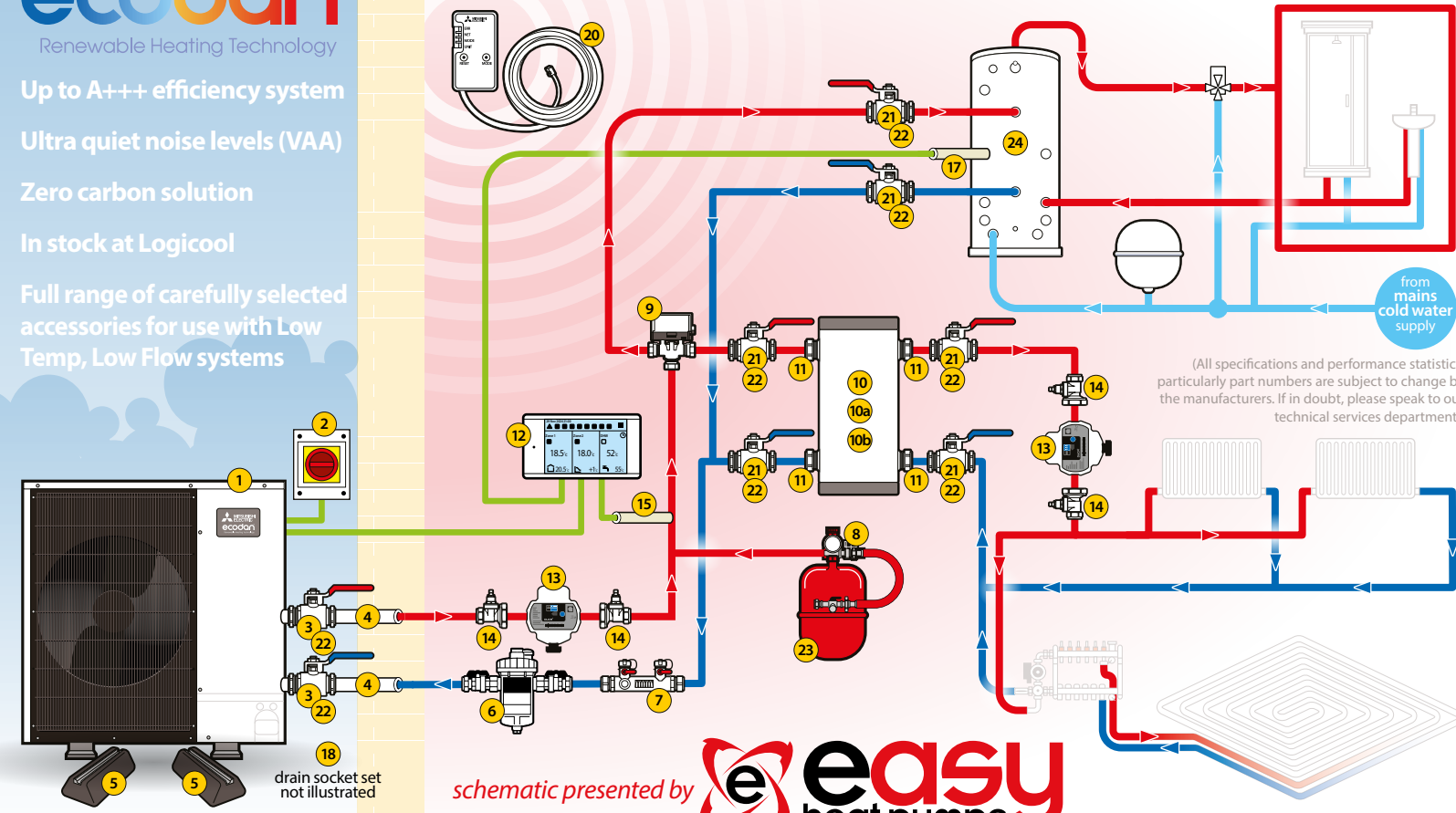
01283 218277
sales@logiccool-ac.com



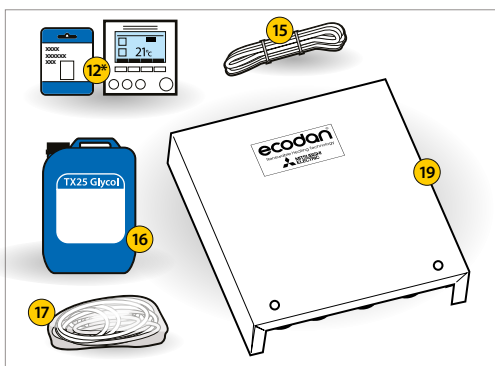
Up to A+++ efficiency system
Ultra quiet noise levels (VAA)
Zero carbon solution
In stock at Logicool
Full range of carefully selected accessories for use with Low Temp, Low Flow systems



01283 218277
sales@logiccool-ac.com



Outdoor unit model reference	Min/Max Flow Rate (Litres)	Outlet Connection	Fuse Amps (Phase)	Heat Pump Registration #
PUZ-WM50V(Y)HA	6.5 - 14.3	1" BSP MI	16(1 _{ph})	HP_0607
PUZ-WM60V(Y)AA	8.6 - 17.2	1" BSP MI	16(1 _{ph})	HP_0609
PUZ-WM85V(Y)AA	10.8 - 24.4	1" BSP MI	25(1 _{ph})/16(3 _{ph})	HP_0610
PUZ-WM112V(Y)AA	14.4 - 32.1	1" BSP MI	32(1 _{ph})/16(3 _{ph})	HP_0611
PUZ-WM140V(Y)AA	17.9 - 40.1	1" BSP MI	40(1 _{ph})/16(3 _{ph})	TBC



Mitsubishi Electric Ecodan 5-14kW (with Third Party Cylinder) **Kit 1**
Customers requiring the full Mitsubishi Specifications, please use the red options

- Mitsubishi Electric Ecodan PUZ-(H)WMA***
- Electrical Isolator 5 to 11.2kW IMO-IS4P32-1P 1 14kW - IMO-IS4P40
- 1" F Swivel x 1" M Extended Lever Ball Isolating Valve (x2) HBPV11
- 750mm long 1" Swivel Bent Female x 28mm Copper Insulated Hoses (pair) HPHOSE750B
Mitsubishi Electric ACC-FCP-S28 1" x 28mm x 500mm Long Insulated Hoses
- Single 600mm Standard Rubber Mount and M10 x 40 Stud Nuts (x2) SF4060 & SF4023
Mitsubishi Electric FF-600-S Fix It Foot 600 Kit
- 28mm Magnetic Filter IKHPMF28
Mitsubishi Electric ACC-MFI-S28 Magnetic Filter TF1
- 28mm Flow Balancing Valve with Fill & Flush Ports INFVB2850
- 15mm Filling Loop with Gauge WRAS Approved FL12041515
- 28mm Three Way Diverting Valve B328DIV
- Buffer Vessel BUFF25 up to 6kW, BUFF50 8.5 to 14kW
10a 0.5" Male Automatic Air Vent AAV007 & K360129
10b 0.5" Male Drain Cock K234004 & K360129
- 1" Male x 28mm Iron to Copper Adaptors. Three Port Valve & Buffer K920406
- Mitsubishi Electric Hard Wired Controller, included with (19)
12* ME Wireless PAR-WT60R-E + PAR-WR61R-E (optional)
- Circulating Pump (x2) 5 to 8.5kW Duca 7862008
11.2 & 14kW Wilo Para 25-130
- 28mm x 1.5" Pump Ball Isolating Valve (x4) K460306
- Mitsubishi Electric PAC-FS-01-E Flow sensor for FTC7 controller
- ThermaBlend Glycol 25 Litre Drum TX25
- Mitsubishi Electric ACC-AFZ-020A 20 litres of Glycol
- FTC7 Cylinder DHW Temperature Sensor 30m Cable with Third Party Cylinder PAC-TH011TKL2-E
- Mitsubishi Electric PAC-SG61DS-E Drain Socket Set
- Mitsubishi Electric PAC-IF082 FTC7 wiring & control centre
- Mitsubishi Electric MAC-5871F-EH WiFi Adapter
- 28mm Full Bore Lever Ball Isolating Valve Red/Blue (x6) TR28LBV
- 28mm/1" Insulating Jacket for Ball Valves (box of 10) INSULBV28
- Heating Expansion Vessel ZI-301012 5 & 6kW ZI-301018 - 8.5kW & ZI-301024 11.2 & 14kW
- DHW Cylinder LOGHPD**** c/w G3 Kit & Expansion Vessel

Up to A+++ efficiency system
Ultra quiet noise levels (VAA)
Zero carbon solution
In stock at Logicool
Full range of carefully selected accessories for use with Low Temp, Low Flow systems

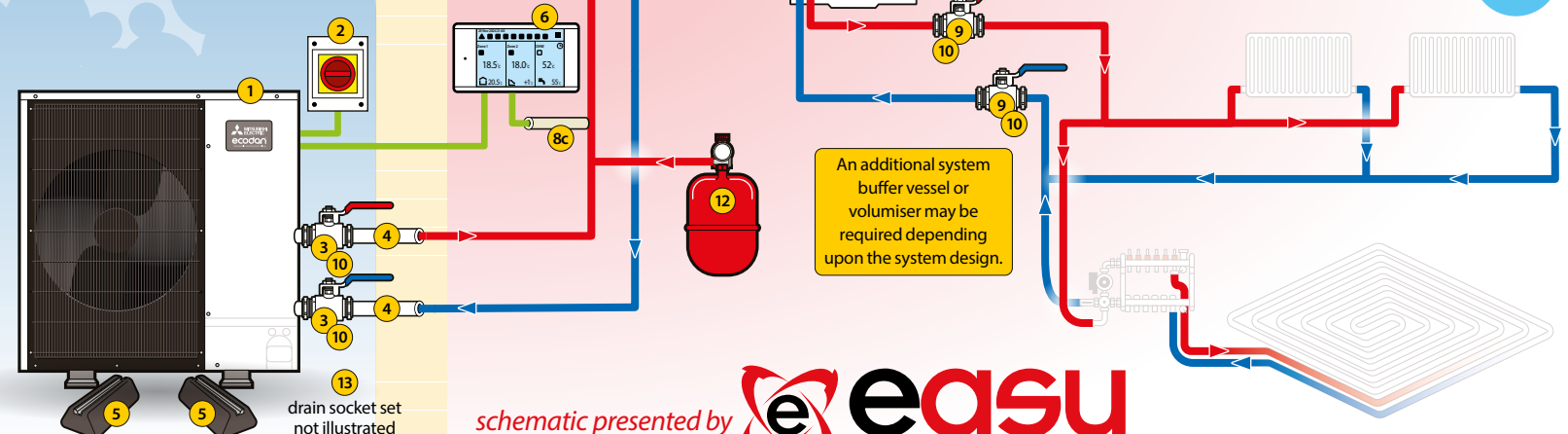
Customers requiring the full Mitsubishi Specifications, please use the red options

- Mitsubishi Electric Ecodan PUZ-(H)WMA***
- Electrical Isolator 5 to 11.2kW
IMO-IS4P32-1P 1 14kW - IMO-IS4P40
- 1" F Swivel x 1" M Extended Lever Ball Isolating Valve (x2) HPBV11
- 750mm long 1" Swivel Bent Female x 28mm Copper Insulated Hoses (pair) HPHOSE750B
- Mitsubishi Electric ACC-FCP-S28 1" x 28mm x 500mm Long Insulated Hoses
- Single 600mm Standard Rubber Mount and M10 x 40 Stud Nuts (x2) SF4060 & SF4023
- Mitsubishi Electric FF-600-S Fix It Foot 600 Kit
- Mitsubishi Electric Hard Wired Controller included with cylinder
- ME Wireless PAR-WT60R-E + PAR-WR61R-E (optional)
- Mitsubishi Electric EHPT*** Pre-Plumbed DHW Cylinder with G3 Unvented kit, DHW Expansion vessel, pumps (x2), filling loop
(see below for other items included with cylinder)

(options included with cylinder)

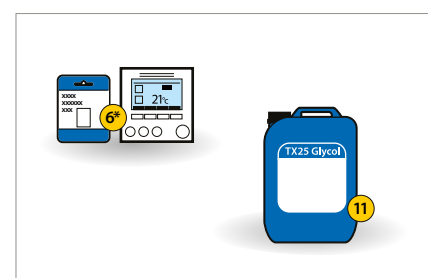
- Mitsubishi Electric PAC-IF082 FTC7
- Mitsubishi Electric PAC-TH011TK2-E DHW Sensor
- Mitsubishi Electric ACC-TMFI-S28 Magnetic Filter
- Mitsubishi Electric PAC-FS-01 Flow Sensor
- Mitsubishi Electric MAC-5871F-EH WiFi Adapter

- 28mm Full Bore Lever Ball Isolating Valve Red/Blue (x6) TR28LBV
- 28mm/1" Insulating Jacket for Ball Valves (box of 10) INSULBV28
- ThermaBlend Glycol 25 Litre Drum TX25
- Mitsubishi Electric ACC-AFZ-020A 20 litres of Glycol
- Heating Expansion Vessel ZI-301012 5 & 6kW ZI-301018 - 8.5kW & ZI-301024 11.2 & 14kW
- Mitsubishi Electric PAC-SG61DS-E Drain Socket Set



schematic presented by **easy** heat pumps

ecodan Renewable Heating Technology outdoor unit model reference	Min/Max Flow Rate (Litres)	Outlet Connection	Fuse Amps (Phase)	Heat Pump Registration #
PUZ-WM50V(Y)HA	6.5 - 14.3	1" BSP MI	16(1ph)	HP_0607
PUZ-WM60V(Y)AA	8.6 - 17.2	1" BSP MI	16(1ph)	HP_0609
PUZ-WM85V(Y)AA	10.8 - 24.4	1" BSP MI	25(1ph)/16(3ph)	HP_0610
PUZ-WM112V(Y)AA	14.4 - 32.1	1" BSP MI	32(1ph)/16(3ph)	HP_0611
PUZ-WM140V(Y)AA	17.9 - 40.1	1" BSP MI	40(1ph)/16(3ph)	TBC

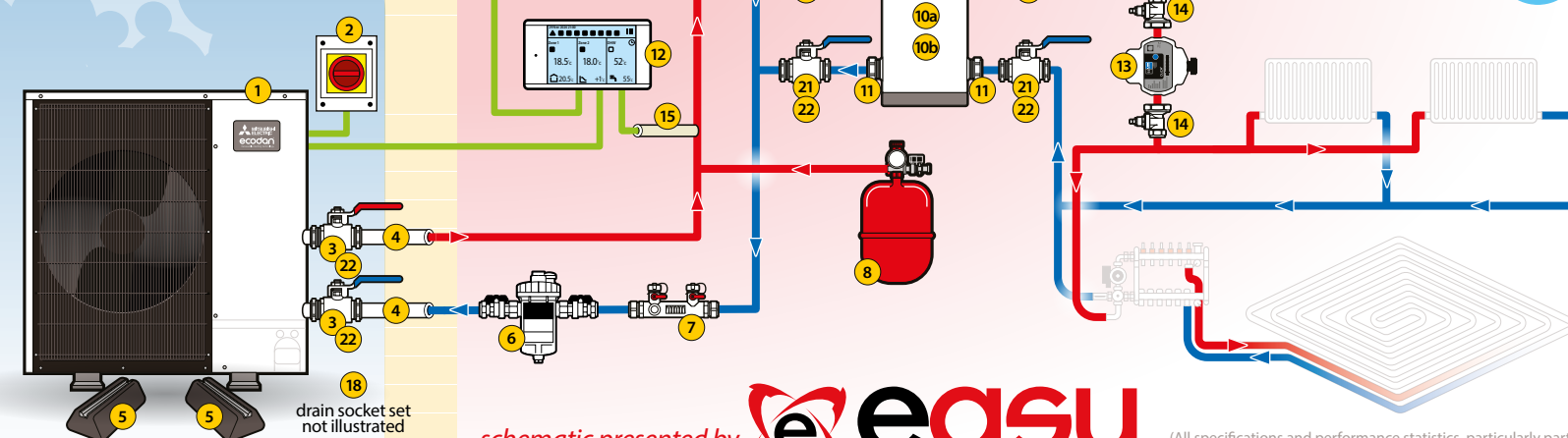


(All specifications and performance statistics, particularly part numbers are subject to change by the manufacturers. If in doubt, please speak to our technical services department).

Up to A+++ efficiency system
Ultra quiet noise levels (VAA)
Zero carbon solution
In stock at Logicool
Full range of carefully selected accessories for use with Low Temp, Low Flow systems

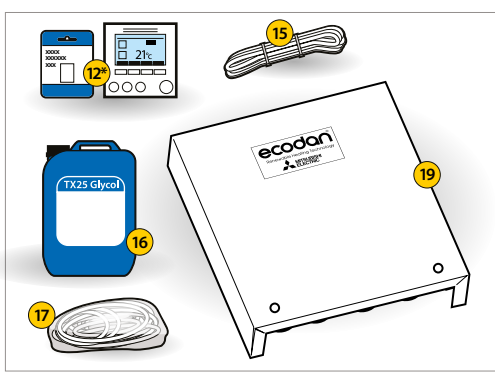
Customers requiring the full Mitsubishi Specifications, please use the red options

- Mitsubishi Electric Ecodan PUZ-(H)WMA***
- Electrical Isolator 5 to 11.2kW
IMO-IS4P32-1P 1 14kW - IMO-IS4P40
- 1" F Swivel x 1" M Extended Lever Ball Isolating Valve (x2) HPBV11
- 750mm long 1" Swivel Bent Female x 28mm Copper Insulated Hoses (pair) HPHOSE750B
- Mitsubishi Electric ACC-FCP-S28 1" x 28mm x 500mm Long Insulated Hoses
- Single 600mm Standard Rubber Mount and M10 x 40 Stud Nuts (x2) SF4060 & SF4023
- Mitsubishi Electric FF-600-S Fix It Foot 600 Kit
- 28mm Magnetic Filter IKHPMF28
- Mitsubishi Electric ACC-MFI-S28 Magnetic Filter TF1
- 28mm Flow Balancing Valve with Fill & Flush Ports INFBV2850
- Heating Expansion Vessel ZI-301012 5 & 6kW ZI-301018 - 8.5kW & ZI-301024 11.2 & 14kW
- Buffer Vessel BUFF25 up to 6kW, BUFF50 8.5 to 14kW
10a 0.5" Male Automatic Air Vent AAV007 & K360129
10b 0.5" Male Drain Cock K234004 & K360129
- 1" Male x 28mm Iron to Copper Adaptors. K920406 Buffer
- Mitsubishi Electric Hard Wired Controller, included with (19)
- ME Wireless PAR-WT60R-E + PAR-WR61R-E (optional)
- UKX068 Lowara Pump for 2 pump version of Pre-Plumbed Cylinders
- 28mm x 1.5" Pump Ball Isolating Valve (x4) K460306
- Mitsubishi Electric PAC-FS-01-E Flow sensor for FTC7 controller
- ThermaBlend Glycol 25 Litre Drum TX25
- Mitsubishi Electric ACC-AFZ-020A 20 litres of Glycol
- FTC7 Cylinder DHW Temperature Sensor 30m Cable with Third Party Cylinder PAC-TH011TK2-E
- Mitsubishi Electric PAC-SG61DS-E Drain Socket Set
- Mitsubishi Electric PAC-IF082 FTC7 wiring & control centre
- Mitsubishi Electric MAC-5871F-EH WiFi Adapter
- 28mm Full Bore Lever Ball Isolating Valve Red/Blue (x6) TR28LBV
- 28mm/1" Insulating Jacket for Ball Valves (box of 10) INSULBV28
- DHW Cylinder LOGHPD**** c/w G3 Kit & Expansion Vessel



schematic presented by **easy** heat pumps

ecodan Renewable Heating Technology outdoor unit model reference	Min/Max Flow Rate (Litres)	Outlet Connection	Fuse Amps (Phase)	Heat Pump Registration #
PUZ-WM50V(Y)HA	6.5 - 14.3	1" BSP MI	16(1ph)	HP_0607
PUZ-WM60V(Y)AA	8.6 - 17.2	1" BSP MI	16(1ph)	HP_0609
PUZ-WM85V(Y)AA	10.8 - 24.4	1" BSP MI	25(1ph)/16(3ph)	HP_0610
PUZ-WM112V(Y)AA	14.4 - 32.1	1" BSP MI	32(1ph)/16(3ph)	HP_0611
PUZ-WM140V(Y)AA	17.9 - 40.1	1" BSP MI	40(1ph)/16(3ph)	TBC



(All specifications and performance statistics, particularly part numbers are subject to change by the manufacturers. If in doubt, please speak to our technical services department).



Up to A+++ efficiency system

Ultra quiet noise levels (VAA)

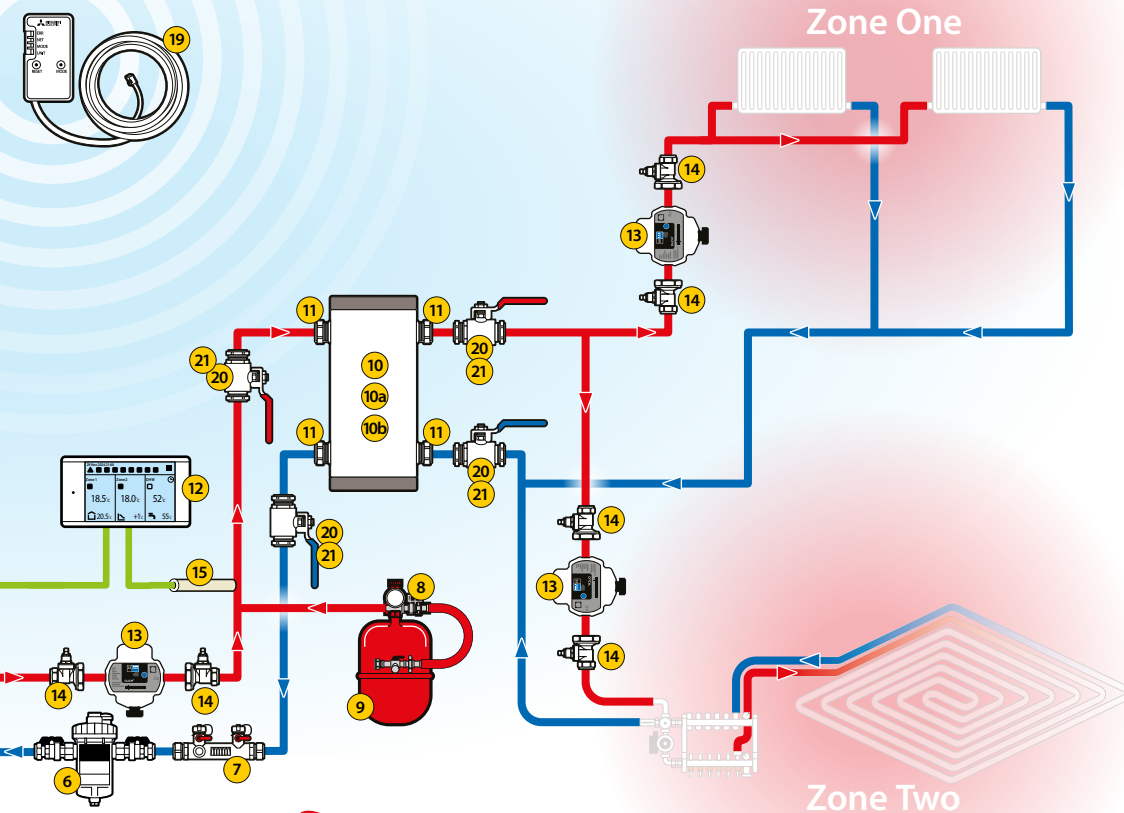
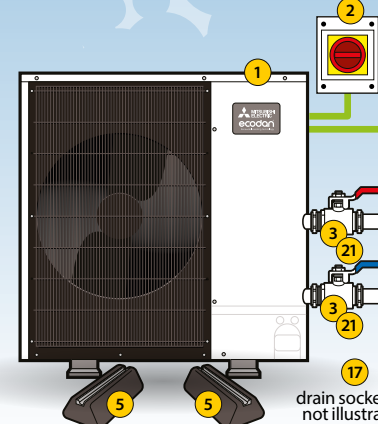
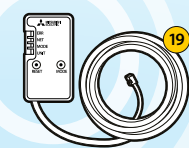
Zero carbon solution

In stock at Logicool

Full range of carefully selected accessories for use with Low Temp, Low Flow systems



01283 218277
sales@logicool-ac.com

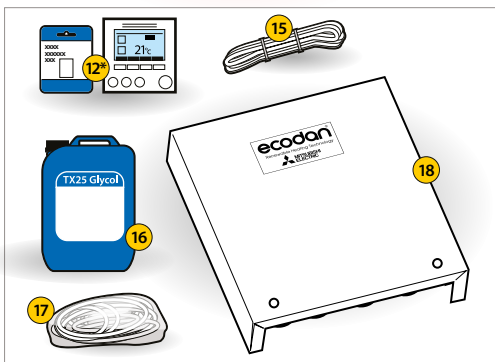


schematic presented by



(All specifications and performance statistics, particularly part numbers are subject to change by the manufacturers. If in doubt, please speak to our technical services department).

ecodan Renewable Heating Technology outdoor unit model reference	Min/Max Flow Rate (Litres)	Outlet Connection	Fuse Amps (Phase)	Heat Pump Registration #
PUZ-WM50V(Y)HA	6.5 - 14.3	1" BSP MI	16(1 _{ph})	HP_0607
PUZ-WM60V(Y)AA	8.6 - 17.2	1" BSP MI	16(1 _{ph})	HP_0609
PUZ-WM85V(Y)AA	10.8 - 24.4	1" BSP MI	25 (1 _{ph})/16 (3 _{ph})	HP_0610
PUZ-WM112V(Y)AA	14.4 - 32.1	1" BSP MI	32 (1 _{ph})/16 (3 _{ph})	HP_0611
PUZ-WM140V(Y)AA	17.9 - 40.1	1" BSP MI	40 (1 _{ph})/16 (3 _{ph})	TBC



Mitsubishi Electric Ecodan 5-14kW (Heating Only) Kit 4

Customers requiring the full Mitsubishi Specifications, please use the red options

- Mitsubishi Electric Ecodan
- Electrical Isolator 5 to 11.2kW
IMO-IS4P32-1P 1 14kW - IMO-IS4P40
- 1" F Swivel x 1" M Extended Lever Ball Isolating Valve (x2) HPBV11
- 750mm long 1" Swivel Bent Female x 28mm Copper Insulated Hoses (pair) HPHOSE750B
Mitsubishi Electric ACC-FCP-S28 1" x 28mm x 500mm Long Insulated Hoses
- Single 600mm Standard Rubber Mount and M10 x 40 Stud Nuts (x2) SF4060 & SF4023
Mitsubishi Electric FF-600-S Fix It Foot 600 Kit
- 28mm Magnetic Filter IKHMPF28
Mitsubishi Electric ACC-MFI-S28 Magnetic Filter TF1
- 28mm Flow Balancing Valve with Fill & Flush Ports INFBV2850
- 15mm Filling Loop with Gauge WRAS Approved FL12041515
- Heating Expansion Vessel ZI-301012 5 & 6kW
ZI-301018 - 8.5kW & ZI-301024 11.2 & 14kW
- Buffer Vessel BUFF25 up to 6kW, BUFF50 8.5 to 14kW
10a 0.5" Male Automatic Air Vent AAV007 & K360129
10b 0.5" Male Drain Cock K234004 & K360129
- 1" Male x 28mm Iron to Copper Adaptors Buffer K920406
- Mitsubishi Electric Hard Wired Controller, included with (18)
12* ME Wireless PAR-WT60R-E + PAR-WR61R-E (optional)
- Circulating Pump (x2) 5 to 8.5kW Wilo Duca 7862008
11.2 & 14kW Wilo Para 25-130
- 28mm x 1.5" Pump Ball Isolating Valve (x6) K460306
- Mitsubishi Electric PAC-FS-01-E Flow sensor for FTC7 controller
- ThermaBlend Glycol 25 Litre Drum TX25
Mitsubishi Electric ACC-AZF-020A Fernox HP5 Glycol
- Mitsubishi Electric PAC-SG61DS-E Drain Socket Set
- Mitsubishi Electric PAC-IF082 (third party FTC7)
- Mitsubishi Electric MAC-587IF-EH WiFi Adapter
- 28mm Full Bore Lever Ball Isolating Valve Red/Blue (x6) TR28LBV
- 28mm/1" Insulating Jacket for Ball Valves (box of 10) INSULBV28

Specialist Distributor of Air Conditioning, Heat Pumps & Climate Control Solutions

Formed in 2008 and offering over 400 years combined industry experience to the trade, Logicool is a technically biased and customer focused specialist distributor of Clivet, Mitsubishi Electric, Panasonic and Hitachi Heat Pump, Ventilation and Air Conditioning Systems.

Our expertise, knowledge and experience enables us to offer pre-sales advice, design and after-sales support for all projects ranging from domestic to large commercial applications.

We excel in customer service and project support. At Logicool, we promise an unrivalled and unbiased approach to all project enquiries, always providing a solution for every application.

Why choose Logicool instead of purchasing from the manufacturer?

Logicool offer four brands of Heat Pumps. This gives us the ability to offer the best solution to the client. We can provide a bespoke selection if the end-users requirement is driven by either efficiency, footprint, styling, noise or price. Unlike some other trades, it is not true that the manufacturer offers better pricing. HVAC manufacturers rely on their specialist distribution partners to offer a premium level of technical support whilst also having the ability to be more agile and responsive to clients needs. Your purchases also qualify for manufacturer "Partner" funds such as Mitsubishi Electric Accredited Heating Installer or Panasonic Pro Club. Therefore all of your qualifying purchases from Logicool contribute directly to your RDF Fund or equivalent.

Our relationships with our supplier partners are significant. Our understanding of Panasonic, Hitachi and Mitsubishi Electric stretch back not years, but decades.

Pre and After Sales Service

Our employees are experienced and knowledgeable in the field of Heat Pumps. This is not new technology for our staff. Logicool's first Heat Pump design and sale was in 2008.

We have a dedicated training room and experienced and knowledgeable staff. We offer bespoke courses customised to your level of understanding. Logicool will work with you to understand your training requirements and design our courses around your experience. Our Easy Heat Pumps brand is dedicated to making your transition to Heat Pumps easier.

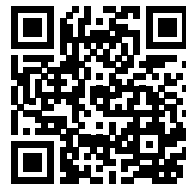
Our employed site engineers have been working with our brands for many years. The Refrigeration Circuit, Inverter and Compressor in a Heat Pump is not new to our team. Some of our employees were born into the Refrigeration industry. These are the same components that we have been working on for a long time. This gives us a technical edge to other competitors when we are on site providing commissioning assistance and advice on your project.

Purchasing with Logicool gives you the right price, qualified and knowledgeable staff with a deep and historic understanding of the product with the added benefit of each of our manufacturers benefits also included.



01283 218277

sales@logicool-ac.com



Unit 1, Highwall Business Park,
Tetron Way, Swadlincote, DE11 0AF

01283 218277

sales@logicool-ac.com