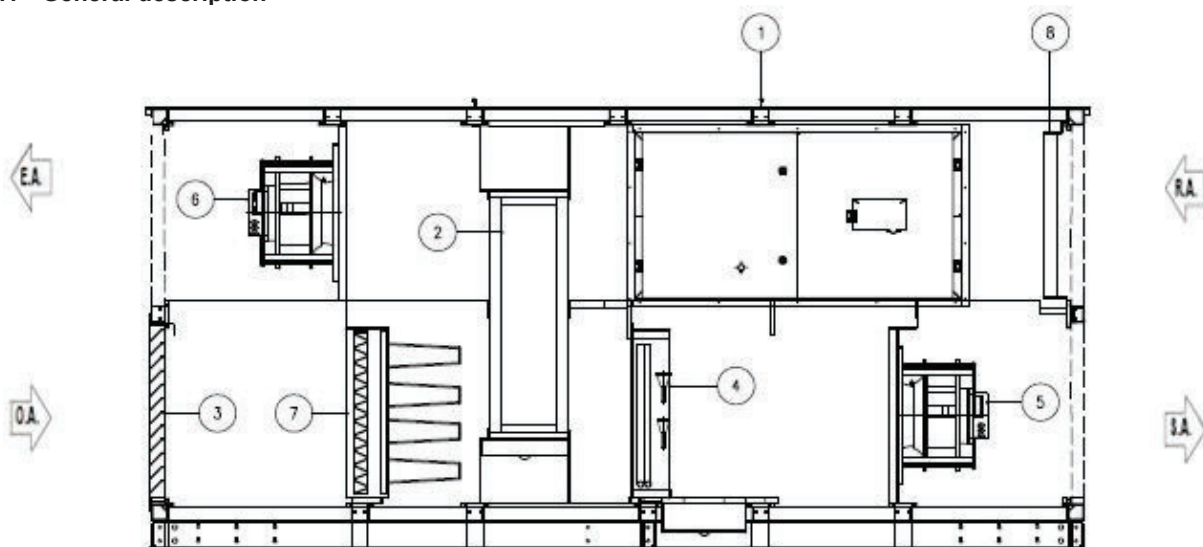


1.3 GENERAL DESCRIPTION

1.3.1 General description



DESCRIPTION:

E.A. → Ejection flow

O.A. → External air flow

S.A. → Ambient delivery flow

R.A. → Ambient return flow

1 → Aluminium cover

2 → Rotary recovery

3 → Grid with anti-intrusion net

4 → ED Coil

5 → Delivery fan

6 → Return fan

7 → Delivery filters

8 → Return filters

The units in the WIZARDX series control the external air intake and are characterised by exceptional energy efficiency and a high level of configurability.

The WIZARDX units have a rotary heat recovery system and energy efficient fans selected in accordance with the European Ecodesign regulation 1253/2014 and are therefore compliant with the ErP 2018 directive.

The WIZARDX series is based on efficient direct expansion technology, where ecological R410A - R32 refrigerants are supplied to the internal coil, in combination with Mitsubishi Mr. Slim outdoor heat pump units.

The electrical power and control panel includes a microprocessor with preloaded exclusive management software that integrates all the characteristic functions of the machine. The panel provides for the integration of one or more Mitsubishi PAC-IF 013 electronic boards, which allow communication to and from Mr. Slim Mitsubishi outdoor units, to ensure their operation always at maximum efficiency.



CAUTION:

The guarantee is rendered null and void when:

- The instructions in this manual are not observed.
- The customer or a third party makes alterations to the unit without the consent of Mehtis.
- Losses or damage to people or things due to improper use of the equipment.

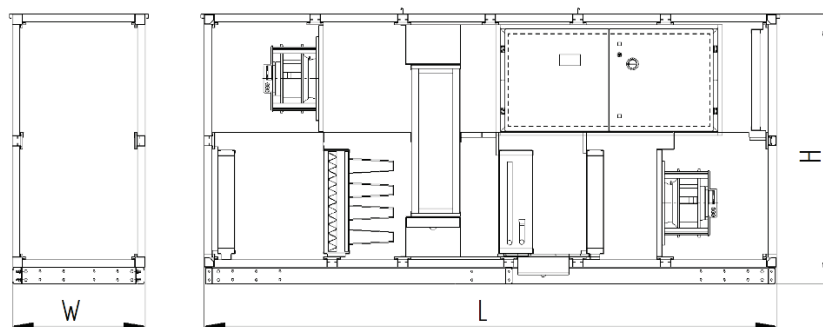
1.3.2 Unit configuration

There are three versions for specific weather conditions and applications:

- **Version C-OU (STANDARD):** version for air renewal only, with handling under conditions of neutral inlet temperature. Control of delivery temperature, optional control of return temperature.
- **Version B-OU (HIGH DEHUMIDIFICATION):** version for air renewal, with increased potential to permit better dehumidification. Control of delivery temperature, optional control of return temperature.
- **Version E-OU:** version for air renewal only, with handling under conditions of neutral inlet temperature with a direct expansion coil with more than one circuit and Mitsubishi Mr. Slim outdoor units for temperate climates. Control of delivery temperature, optional control of return temperature.

1.3.7 Information on the packaging

On the outside of shrink-wrapped units are dispatch labels and the drawing showing how to lift and handle the unit. All the other information regarding the unit can be found and are only visible after removing the shrink wrapping.



Dimensions and weight data of standard units

C-OU and E-OU versions	Q	W	H	L	N.	WEIGHT
	[m ³ /h]	[mm]	[mm]	[mm]	SECTIONS	[kg]
WIZARDX 3000	3000	1000	1600	3400	1	850
WIZARDX 5000	5000	1400	1600	3400	1	1000
WIZARDX 7500	7500	1500	2200	3400	1	1150
WIZARDX 10000	10000	1800	2200	3400	1	1350
WIZARDX 12500	12500	2000	2300	3400	1	1600
WIZARDX 15000	15000	2200	2360	3800	3	1950
WIZARDX 20000	20000	2500	2820	3800	6	2300

B-OU version	Q	W	H	L	N.	WEIGHT
	[m ³ /h]	[mm]	[mm]	[mm]	SECTIONS	[kg]
WIZARDX 3000	3000	1000	1600	3400	1	860
WIZARDX 5000	5000	1400	1600	3400	1	1020
WIZARDX 7500	7500	1500	2200	3400	1	1180
WIZARDX 10000	10000	1800	2200	3400	1	1380
WIZARDX 12500	12500	2000	2300	3400	1	1640
WIZARDX 15000	15000	2200	2360	3800	3	1990
WIZARDX 20000	20000	2500	2820	3800	6	2360

The electrical and mechanical connection of single-section WIZARDX units is done directly at the factory.

Refer to the chapter "JOINING THE SECTIONS" for the electrical and mechanical connection of WIZARDX units in more than one section.

Dimensions and weight data of the units divided into five sections (solution on request)

C-OU and E-OU versions	Q	W	H	L	N.	WEIGHT
	[m ³ /h]	[mm]	[mm]	[mm]	SECTIONS	[kg]
WIZARDX 3000	3000	1000	1660	3520	5	890
WIZARDX 5000	5000	1400	1660	3520	5	1050
WIZARDX 7500	7500	1500	2260	3520	5	1210
WIZARDX 10000	10000	1800	2260	3520	5	1420
WIZARDX 12500	12500	2000	2360	3520	5	1680
WIZARDX 15000	15000	2200	2420	3800	5	2050
WIZARDX 20000	20000	2500	2820	3800	6	2300

B-OU version	Q	W	H	L	N. SECTIONS	WEIGHT
	[m ³ /h]	[mm]	[mm]	[mm]		[kg]
WIZARDX 3000	3000	1000	1660	3520	5	900
WIZARDX 5000	5000	1400	1660	3520	5	1070
WIZARDX 7500	7500	1500	2260	3520	5	1240
WIZARDX 10000	10000	1800	2260	3520	5	1450
WIZARDX 12500	12500	2000	2360	3520	5	1720
WIZARDX 15000	15000	2200	2420	3800	5	2090
WIZARDX 20000	20000	2500	2820	3800	6	2360

**CAUTION:**

The packaging used to protect the machine must always be kept out of the reach of children as it represents a hazard.

2 TRANSPORT, STORAGE AND INSTALLATION

2.1 Transport and handling instructions

**CAUTION:**

The weights indicated in the unit dimensional drawings are with the exchangers empty, without water load.

2.1.1 Storage

If the units are not installed immediately upon receipt, they must be kept in a dry and clean place ready for future use. The openings must be protected to prevent dirtying of and/or damage to the internal and external parts of the unit, as well as the intrusion of water and foreign bodies. The electrical panels must remain closed.

During storage and transport, keep the machine within the following temperature ranges (wider ranges are possible but must be discussed when ordering):

Coolant	R410A - R32
T min (°C)	-10
T max (°C)	46

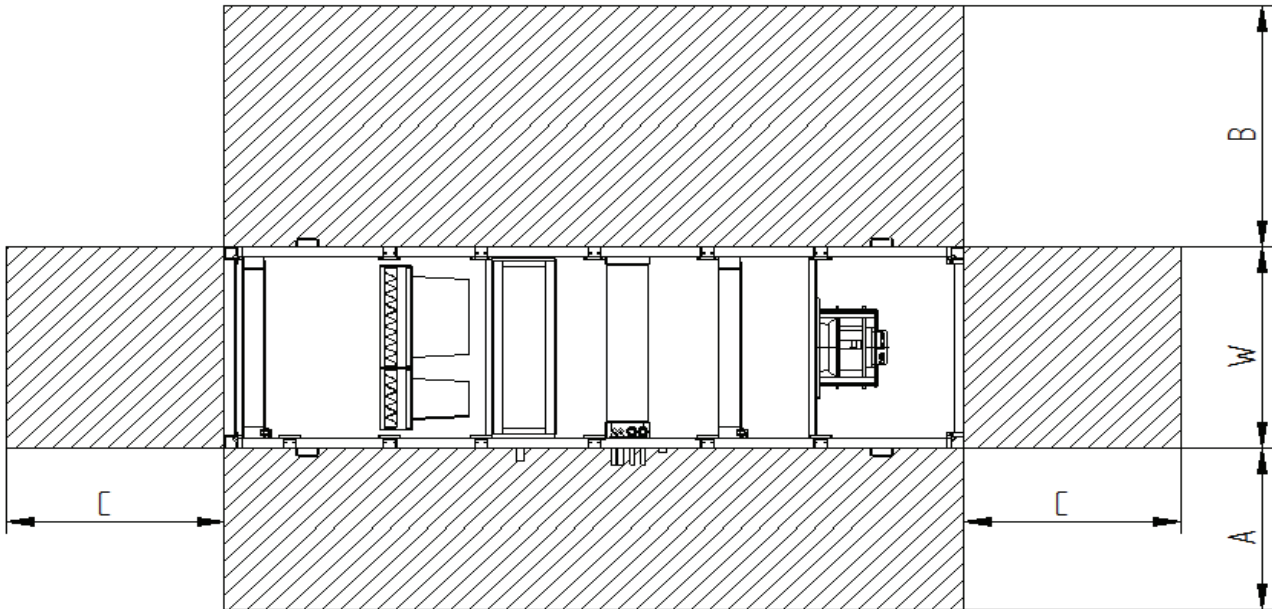
**INFORMATION:**

For the storage of units containing R32, depending on the quantity, it may be necessary to check the fire prevention certificate to validate the company warranty.

- Even with the unit off, prevent the fluids in contact with the heat exchangers from exceeding the limits indicated in this manual, or from freezing.
- When there is a hydraulic circuit, do not use fluids other than water or mixtures of water and ethylene/propylene glycol at the maximum concentration allowed for the components installed.
- The unit may only be used for the purpose it was designed for. Any other use may be dangerous and will void the warranty.

**CAUTION:**

Correct installation of the machine requires compliance with the clearances shown in the figure (plan view of an example of a WIZARDX unit). This allows ease of access to the components of the machine for the purpose of normal inspection and maintenance operations.



The unit must be put in a position where there is sufficient space for performing routine and extraordinary maintenance. Observe the following points:

- W: width of the WIZARDX unit;
- A: arrange for an area in front of the side of the inspection doors and manifolds that is as long as the machine and of a width of 800 mm;
- B: arrange for an area in front of the side opposite that of the connectors and inspection doors, as long as the machine and of a width equal to the width of the AHU (W) plus 200 mm, so that the coils can be taken out without the need to remove the cooling circuits or valve assemblies. If this area cannot be arranged here (for example if the unit is near a wall), it must instead be arranged in front of the side of the inspection doors and manifolds.
- C: arrange for an area at the point of the air outlet and air inlet of a width equal to the width of the AHU (W) and of a length of 1000 mm.

**INFORMATION:**

In the case of accessories and options (for example a humidifier module or a mixing module), the clearances must be calculated considering the maximum overall dimensions with all the accessories/options provided. Check the dimensions of the accessories/options in the relevant chapter.